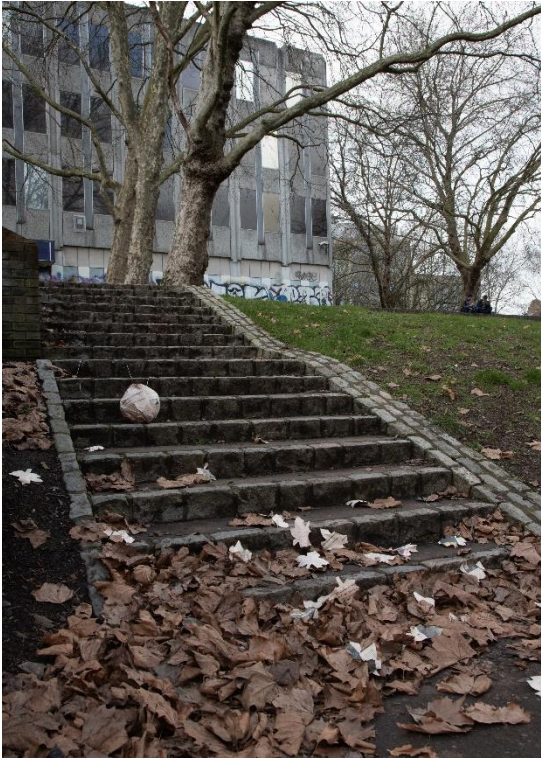


The absurdity of the unoccupied



Sublime Indifference

Castle Park, Bristol, naturally adjusting through the seasons. Spring will bring temporary comfort for those sleeping out, in sight of the many long-term unoccupied properties. Conditions demand the absurdity of heating the vast space to prevent the pipes from freezing.

The trees will blossom covering the empty banking residence. The scale of trickle down security fails reach Bristol's unhoused and unsettled.



A framework of detachment

Separated from the necessities of modernity and unconnected to the routes of recovery.

Pitched within the local public park, in view of a perceived higher authority. A towering force, secured and unoccupied to keep the detached visibly distanced.

A sense of reliance is placed upon nature and local authority goodwill. Either can remove the precarious shelter without recourse.



Thirty years of unoccupied existence

Security that keeps people out, has no obligation to keep people safe. Possessions unsecured, whilst bank vaults and offices decay through the longevity of neglect.

The power that keeps an ever increasing asset from opening its arms, has no links to Bristol's homeless through thirty years of unoccupied existence. A period defined by soaring land prices, keeping developers assured and those in need of shelter, out.



Exposure of unsettlement

Bedding down, encased in a springboard of leaves. The conditions expose and endanger existence.

South Western winds impregnate the damp duvet providing opportunities for a dryer less sodden sleep. The prevailing wind throws up leaves, occasionally burying the flimsy mattress, a spectacle that would continue throughout the night, hibernating those who have no desire to be visible.



Empty structures of investment

Developments unoccupied for extended periods. Boarded up windows, rusted from time, erected to keep the unsheltered out, comes at a cost to manage protection.

Unwanted guests elevate the costs to evict. The structure supports the developers desire to replace rusty cage fencing, should entrances be breached. The building may be derelict, but the investment is far from empty.



Established Doorways

The defaced unoccupied building, once the symbol of institutionalized prosperity. Strewn clothes symbolize the presence of a previous owner using the Bank of England's powerful identity to reside.

The diminished existence of power remains authoritative, despite the signs of disrepair and neglect. The presence of established power remains a combative symbol of a boundary when polarized against the marks of inequality.



Address Unknown

Tent 2, Castle Park, Adjacent to the bandstand.
No post code, No addressee.

With identity removed the feelings of anonymity are elevated to slide toward a reduced level of attachment to society.

Secluded and disenfranchised from inside the claustrophobic reality of life's secure boundaries. The detachment brings an absence of communication and the reality of invisibility.



Legally Homeless

Possessions and evictions suspended during the pandemic shorten the notice period to eight weeks. A lack of housing stock gives little opportunity to locate new shelter in a short period.

A sense of disillusionment presents itself through the frustration of searching for low cost housing in a buoyant housing market, within a city centre of increasing costs.



The paradox of absurdity

The absurdity of financial markets hanging from a tree diminishes the absurdity presented by three decades of unoccupied inactivity lying behind.

The paradox of being forced to live outside in a park constantly surrounded by vacant rooms, whilst contractors maintain the security to keep those outside, from coming in.